

# ALUTEC®

OUTDOOR SOLUTIONS

FOR MOMENTS  
THAT LAST.





The background image shows a wooden deck with diagonal planks in the foreground, transitioning into a body of water with gentle ripples in the background. The water has a blue-green hue.

## Fire-resistant aluminum decking board

Designed for use on

- ◆ Terrace,
- ◆ Balcony and
- ◆ Jetty

# Content

---

## **01      AluTec**

04 About us

06 Program overview

## **02      TerraLine**

08 The decking

09 The Click-connection

10 Dual optics

11 Certificates & guarantee

11 Decking systems

12 Flex decking vs. System decking

13 Accessories

## **03      BaseLine**

14 General

14 Alu substructure

15 Substructure Flex & System decking

16 Impact sound insulation tape

17 Elevations

## **03      Contact**

# AluTec – outdoor solutions

### **For moments that last.**

Your experts for innovative aluminum outdoor solutions.

We offer you not just a product, but a solution for sustainable and long-lasting outdoor spaces. With our unique technology, we create solutions that not only impress, but also remain reliable and easy to maintain for years to come.

### **ALUMINIUM – the perfect choice for outdoors!**

Our outdoor solutions made of high-quality aluminum offer an unbeatable combination of durability, waterproofness and effortless handling. No rust, no deformation – but maximum robustness and resistance to all weather conditions. So you can enjoy your outdoor area all year round without having to worry about maintenance or damage.

### **Sustainability meets innovation!**

Aluminum is not only extremely durable and resistant to weathering, it is also fully recyclable. Thanks to its recyclability, it remains a valuable raw material.

With AluTec, you are opting for a solution that offers years of enjoyment – without compromising on quality:

- ◊ Quality,
- ◊ Design and
- ◊ Functionality.

**– for moments that last.**



Durable



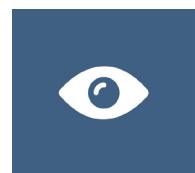
Guarantee



Easy installation



Recyclable



Aesthetics



## **Rely on AluTec – outdoor solutions that offer more!**

Trust us to deliver a terrace that combines striking design with exceptional functionality. Our innovative solutions help you create a lasting space.

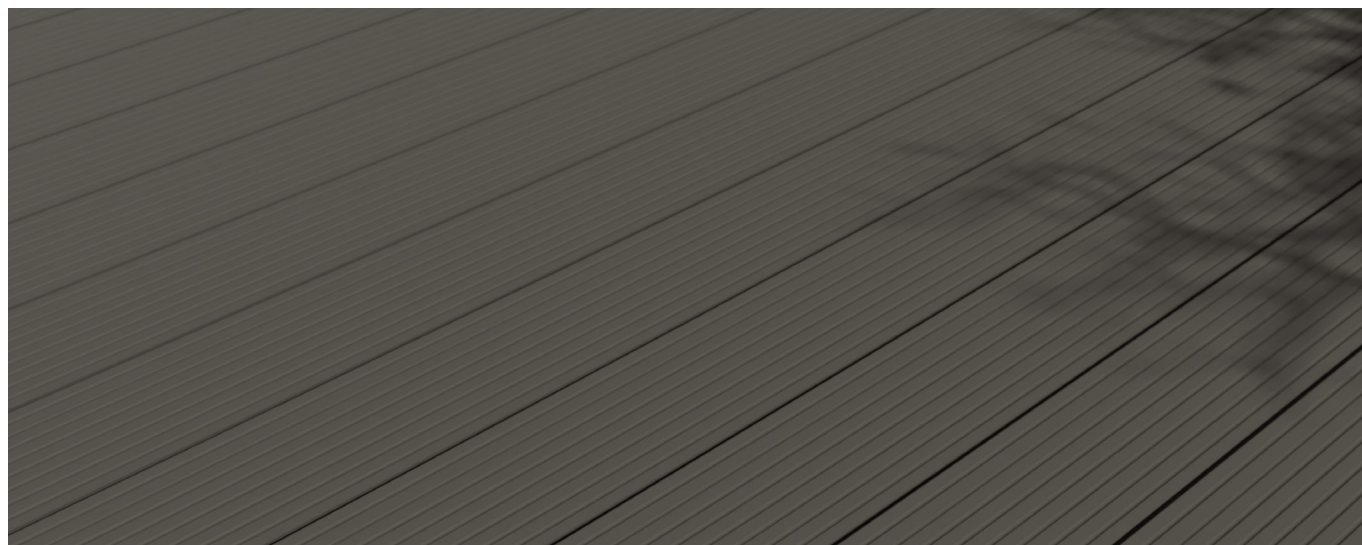
# **Innovative systems for quick and safe installation**

---

**We offer you innovative connection systems that are the perfect solution for every project – quick, safe and flexible to use. Suitable for terraces, pool surrounds and a wide range of other applications.**

### **What AluTec offers you!**

AluTec offers more than just the perfect terrace – we provide a full range of premium solutions for your entire outdoor area. In addition to our durable decking boards, we offer you the right accessories to customize your patio. You will also find stylish and modern alternatives to conventional products. This allows you to create added aesthetic value for your garden and enjoy long-lasting quality made from aluminum.



# AluTec – our product overview

---

**Discover the versatile world of AluTec! High-quality solutions for durable and stylish outdoor areas.**

We offer high-quality solutions for decking and metal constructions. Our focus is on decking boards, including matching substructures, as well as metal construction and accessories.

## AluTec TerraLine



AluTec Click decking boards in two versions + optional clip for dual design.

## AluTec BaseLine



The substructure from AluTec – durable, stable and perfect for your outdoor projects.

### **Sophisticated systems for the highest demands**

Our AluTec product range has been specially developed for demanding outdoor projects:

- ♦ **AluTec TerraLine:** Our AluTec Click decking boards with innovative click connection, easy to install, high-quality design and functional surface.
- ♦ **AluTec BaseLine:** The stable basis for your projects – durable, resilient and maintenance-free substructure.

The combination of these systems creates an outdoor area that is not only functional but also visually appealing – for many years to come.













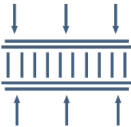









## 02 AluTec TerraLine

AluTec TerraLine

### Decking

With AluTec Click, you can rely on a decking solution that perfectly combines design, functionality and durability. Thanks to innovative technology and high-quality aluminum, you can enjoy maximum comfort with minimum effort. All the advantages at a glance:

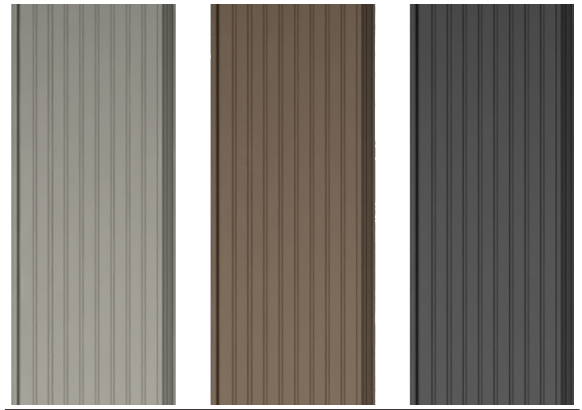
Material		Durability & Longevity	
	Full-Aluminium		Durable
	Recyclbar		Dimensionally stable
	Fire resistant		Heat resistant
	30-year guarantee		Resilient
	Diamant surface		Color stable
	Layer thickness		Weatherproof
Design and application		Care and suitability for everyday use	
	Color options		Easy to clean
	Aesthetically pleasing		Low maintenance
	Easy installation		Slip-resistant



### Three colors. Countless possibilities.

Whether elegant brown, modern gray or timeless dark gray – with AluTec decking, you can design your terrace to suit your style. All colors are perfectly matched to the system and create an all-round harmonious overall look that impresses in terms of design and function.

- ◇ light grey
- ◇ brown
- ◇ dark grey



AluTec TerraLine

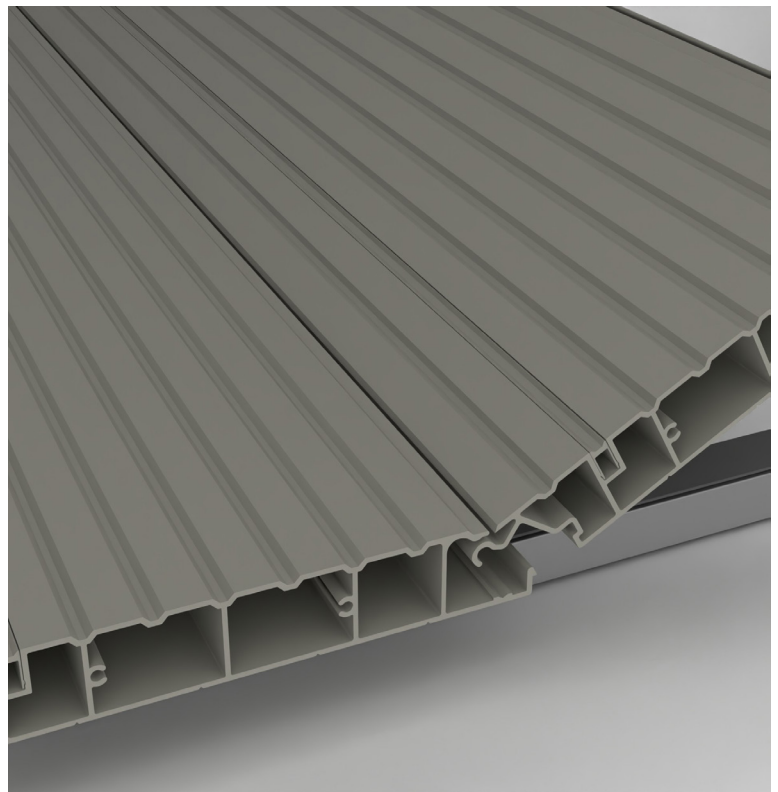
## The Click-Connection

### Revolutionary click connection for effortless installation

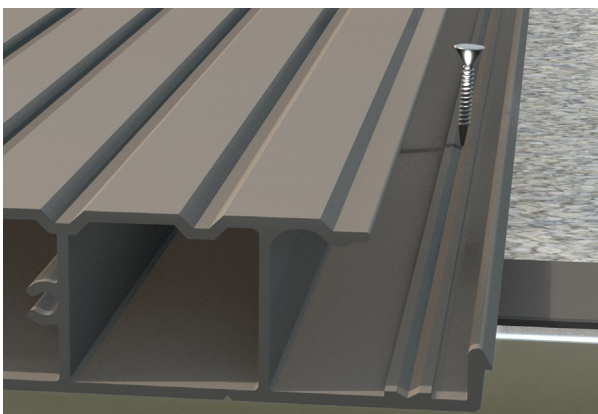
With our protected click connection: Click, snap, done – with our protected connection, laying AluTec Click decking boards is a breeze.

**One simple click** is all it takes for the boards to sit firmly, precisely and securely – without any visible screws or complicated tools.

Thanks to this innovative technology, installation is not only quick and effortless, but also ensures a flawless, continuous look. Despite the click connection, the planks are waterproof and can withstand even the most demanding weather conditions.



**For moments that last.**

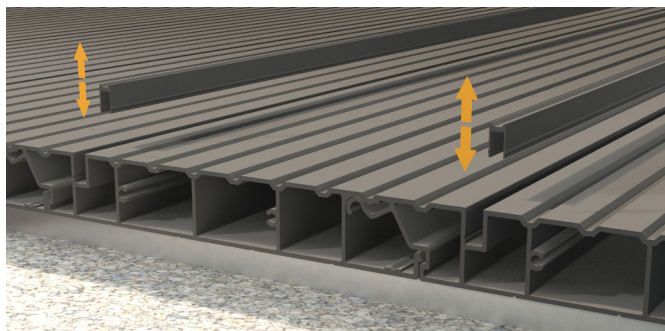


#### Another Highlight:

Once clicked in, the cleverly hidden screw connection vanishes beneath the surface – leaving nothing but clean lines and a stylish finish.

Discover the new generation of decking boards – high-quality, precise and elegant. With AluTec Click, you can create your perfect outdoor area in record time.

## Dual optics

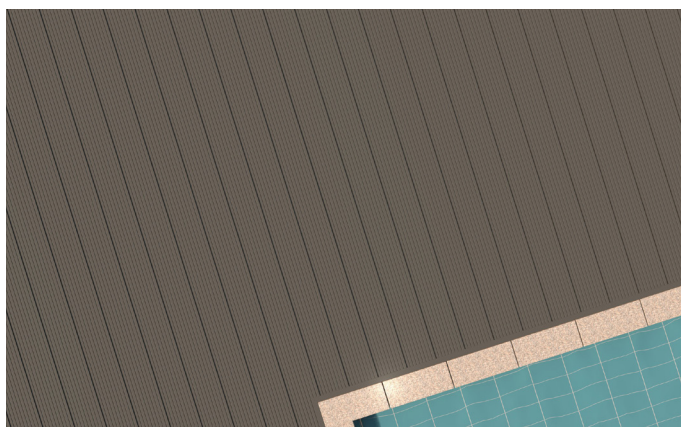


With AluTec Click you have the choice!

Thanks to the clip for the dual look, you can customize the appearance of your terrace to suit your taste. The clip is simply inserted with a rubber mallet after installation, but before fitting the end profile.

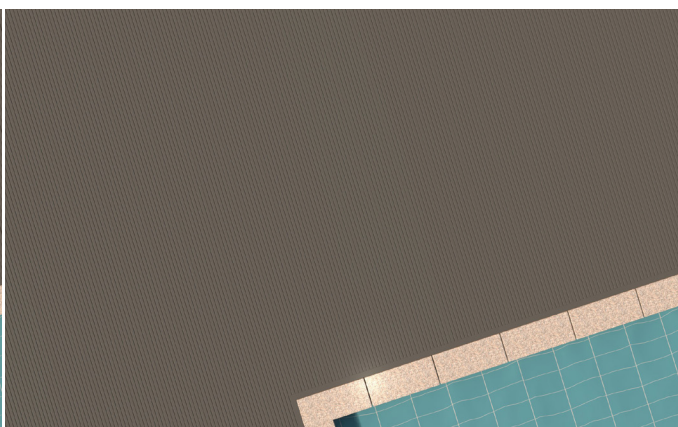
### PLANK LOOK

No clip is used, preserving the classic appearance of traditional decking boards.



### SEAMLESS LOOK

With the clip inserted, a smooth, continuous surface is created for a clean, modern finish.





## Certificates & Guarantee

---

### Certificate:

Our products have been awarded various certificates that guarantee the highest quality and safety. These include certificates for the protection of the click connection and the dual optics, which ensure particularly stable and safe use. We also offer certificates for slip and abrasion resistance, which guarantee a high level of safety in different environments. Further information and full details of our certificates can be found on our website: [www.alutec-austria.at](http://www.alutec-austria.at).

### Guarantee:

30-year guarantee – for carefree decking enjoyment. We guarantee 30 years of protection against splitting, swelling, warping and material and manufacturing defects. The guarantee only applies if the decking is used as intended and in accordance with normal commercial practice. It does not cover damage caused by improper use – such as excessive or unusual loads, misuse or commercial use outside the intended areas of application.

## Decking versions

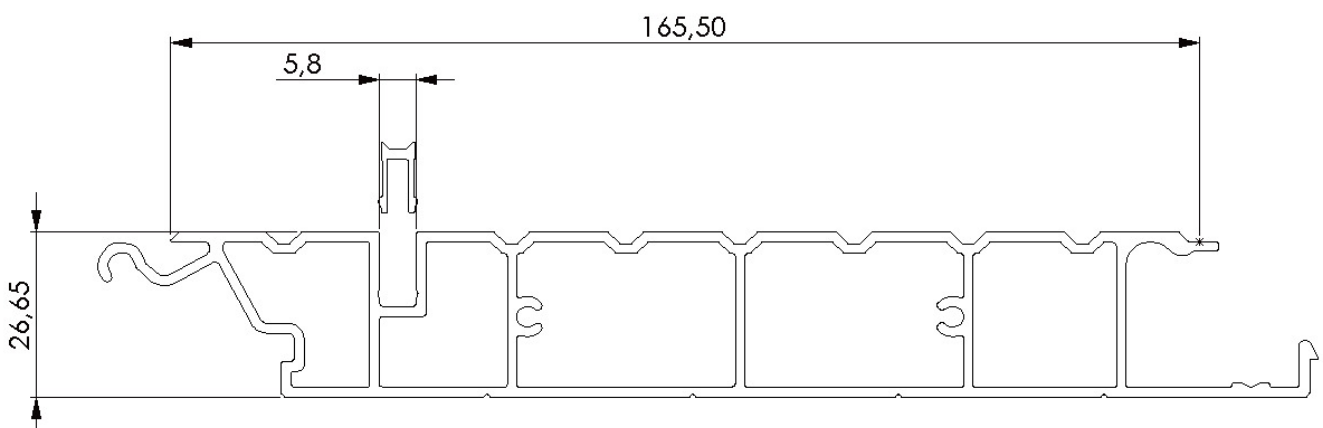
---

We offer our AluTec Click decking boards in two versions:

- ◇ Flex-Decking
- ◇ System-Decking

The **long decking boards (Flex-Decking)** are individual planks with a length of 4.000 mm. The matching accessories such as substructure, footfall sound insulation strip, kick-off profile, end profile and screws can be ordered individually.

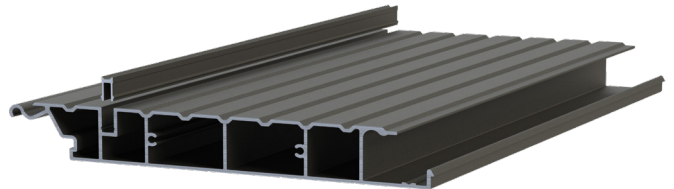
The short **decking boards (System-Decking)** is supplied as a practical set. It contains 4 planks, each 2.200 mm long, 1 substructure, insulating tape and a screw set (8 pieces). Of course, the matching accessories can also be purchased separately.



# Flex-Decking vs. System-Decking

## Flex-Decking

<b>Size</b>	width 196,17 mm, height 26,65 mm
<b>Deck width</b>	165,5 mm
<b>Length</b>	4.000 mm
<b>Surface</b>	diamant powdercoating
<b>Substructure space</b>	up to 800 mm
<b>Joint size without clip</b>	5,84 mm
<b>Special length</b>	on request

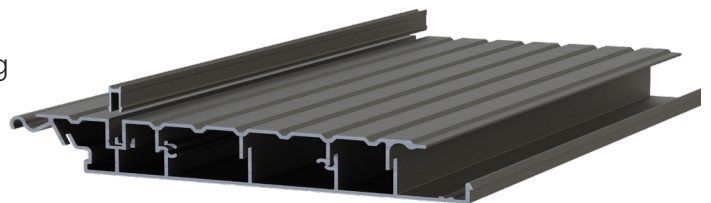


### **Flex-Decking** - Maximum freedom

The Flexdecking is our answer to individual design ideas and customized projects. With an impressive length of 4,000 mm, we enable large-scale installation with few or no joints - for a calm, elegant overall appearance. Thanks to the proven guidance of each individual plank along its long side, joints no longer need to align with the substructure-allowing maximum freedom in planning and installation. Whether substructure, insulating tape, end strips or step profiles - the accessories are put together individually as required.

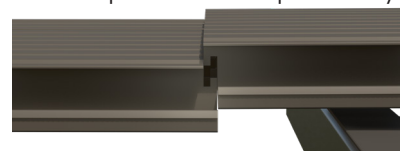
## System-Decking

<b>Size</b>	width 196,17 mm, height 26,65 mm
<b>Deck width</b>	165,5 mm
<b>Length</b>	2.200 mm
<b>Surface</b>	diamant powdercoating
<b>Substructure space</b>	up to 800 mm
<b>Joint size without clip</b>	5,84 mm
<b>Special length</b>	/



### **System-Decking** - smartly bundled into a complete set

The system plank comes with everything you need for your project - perfectly coordinated in a compact box. The set contains four AluTec Click planks of 2,200 mm each, an intelligent substructure including rail connectors, insulating tape and screw set. Thanks to the click-connection on the long and short sides, a precise and clean installation pattern is created. The planks click perfectly into place, and since joints don't need to align with the substructure, installation becomes easier and more flexible than ever.





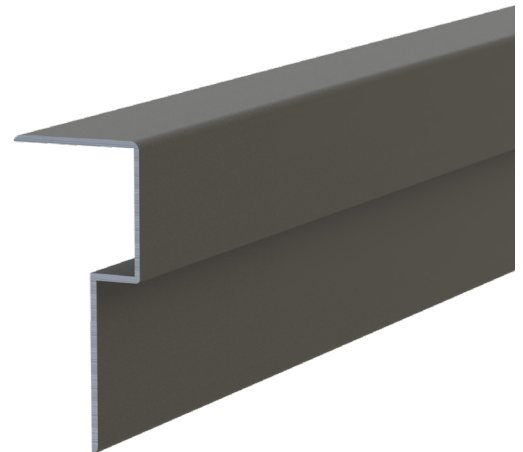
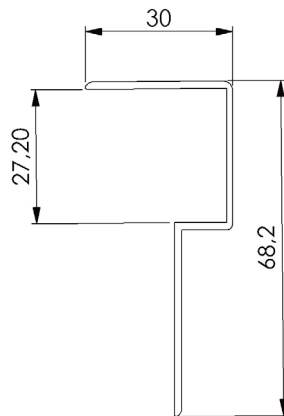
# Accessories

For a high-quality and all-round harmonious decking structure, we offer two functionally sophisticated and visually perfectly integrated accessory profiles to complement the AluTec Click decking boards - in both versions:

- ◇ End profile
- ◇ Starter / step profile

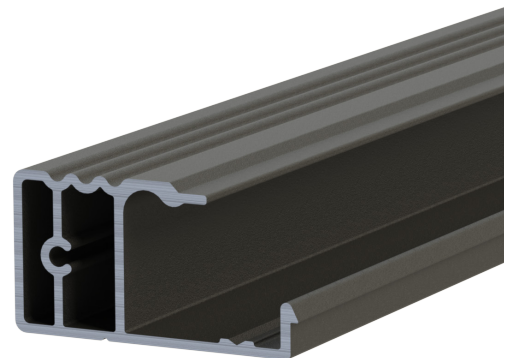
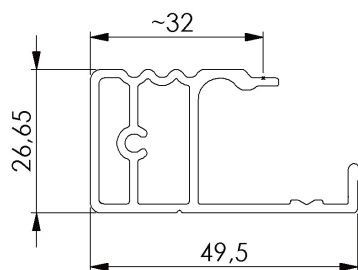
## Endprofile:

The end profile elegantly covers open plank edges, creating a clean and seamless outer finish. It also serves as protection against moisture and dirt penetration - creating a durable and sophisticated overall look.



## Starter / step profile:

The starter / step profile provides an elegant and secure finish on open edges or steps. It protects the long side of the plank, creates clean transitions and gives the terrace a clear, high-quality contour - especially where height differences need to be elegantly bridged.



## Accessories + substructure

The matching accessories from AluTec - such as substructure, impact sound insulation tape or elevation - are explained in detail from page 14 onwards - for an all-round well-thought-out installation.

AluTec BaseLine

# Substructure

The perfect base for your AluTec Click decking!

A high-quality decking starts with the right foundation: our AluTec substructure. Stable, durable and easy to install – our substructure ensures a perfect fit and maximum durability, even in demanding conditions. Let your decking shine in all its glory without compromising on stability.

### **Alu substructure profile**

Our substructure profiles provide the ideal basis for a stable and durable substructure. Three profiles for all requirements – for simple and precise installation.

### **Impact sound insulation tape (optional)**

Our impact sound tape provides an additional protective layer between the plank and substructure. It helps to dampen noise, prevents the planks from rubbing directly against the subfloor and provides even more benefits.

### **Elevation**

Increased stability for different substrates. Our upright solution offers a perfect way to install your decking on uneven or damp surfaces.

AluTec BaseLine

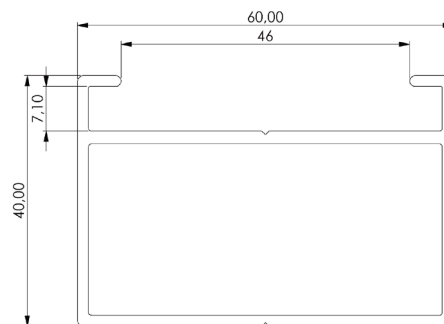
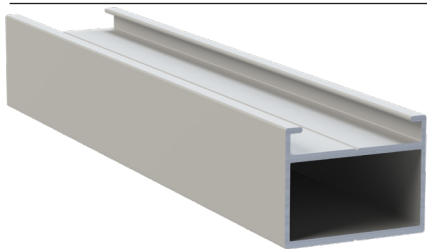
## Alu substructure profil

We cover various requirements and installation methods with our subfloor profiles. Different substructures are used depending on the plank design, whether flex plank (long decking board) or system plank (short decking board). This ensures optimum stability and accuracy of fit for the respective system. The following section provides detailed information on each substructure:



## Aluminium substructure profile | Flex-Decking

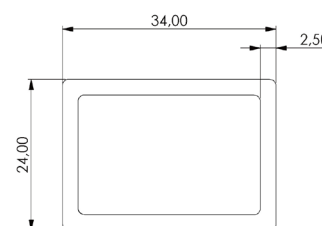
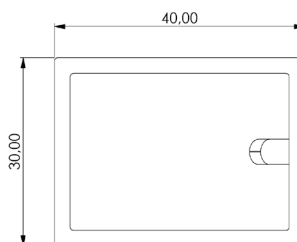
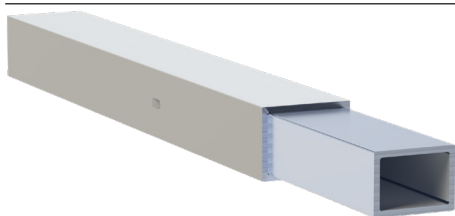
60 x 40 x 4.000 mm



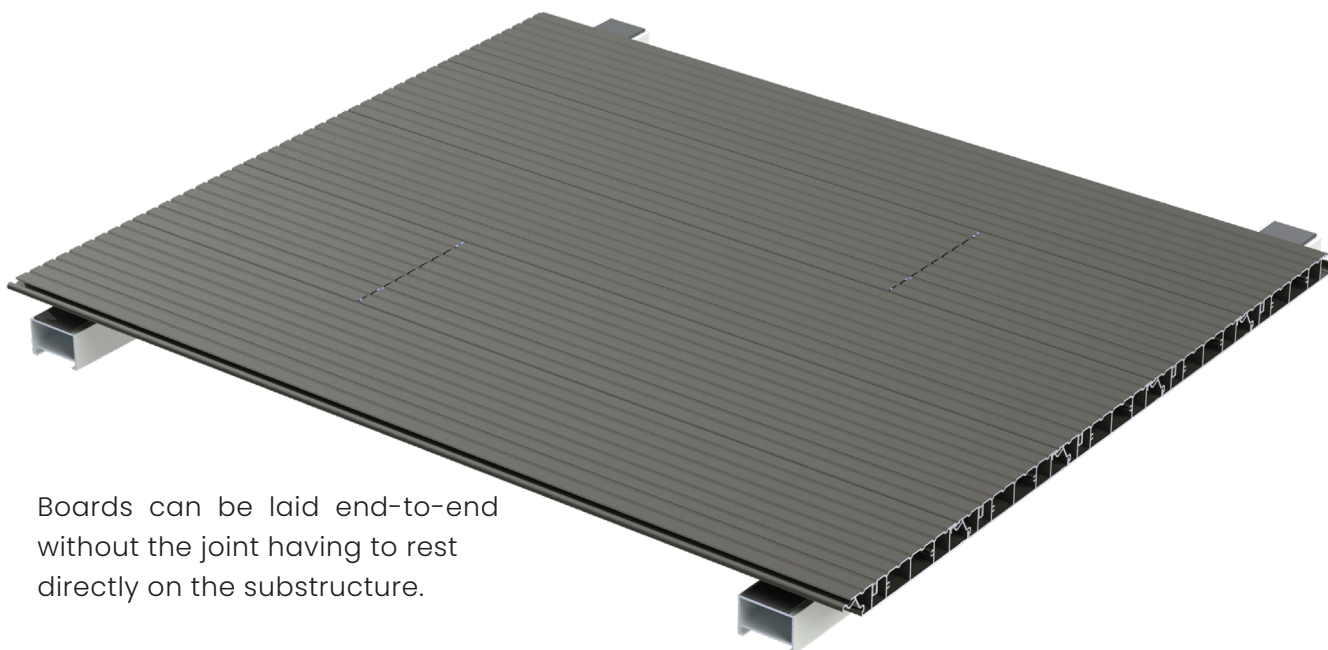
The standard substructure profile for the flexdecking is supplied in lengths of 3,900 / 4,000 mm and enables a substructure spacing of up to 800 mm. This saves material and reduces the installation effort.

## Aluminum substructure profile + rail connector | System-Decking

30 x 40 x 2.200 mm + 34 x 24 x 200 mm



The 40x40 mm substructure profile is supplied in a length of 2,200 mm and enables a substructure spacing of up to 800 mm. The 200 mm long rail connector (34 x 24 mm), which is inserted halfway into the substructure profile at the factory (in the set for the system plank), ensures maximum flexibility.



Boards can be laid end-to-end without the joint having to rest directly on the substructure.

## Impact sound insulation tape

---

**EPDM impact sound insulation tape:** Our recyclable impact sound insulation tape made of high-quality rubber is the ideal addition to your substructure. In addition to acting as a protective layer between the plank and substructure, it also offers effective sound insulation. Robust and durable, it contributes to the optimum quality and durability of your decking.



## Elevation

---

### **Stability and durability for your terrace:**

Our elevating solution makes it possible to lay your decking perfectly and evenly on uneven or damp ground. Elevating the substructure creates a stable base that protects against ground moisture and at the same time allows optimum air circulation. This ensures the long-term durability and stability of your decking.

### **Pedestal bearing:**

Our pedestals allow for flexible height adjustment by simply turning to the left or right. With our elevating solution, you can achieve a flawless, even deck surface – no matter how uneven or damp the ground is. The design ensures a secure hold by screwing the substructure to the pedestals and makes it much easier to compensate for slopes. Thanks to the telescopic height adjustment and the interlocking components, our pedestals offer maximum comfort and safety. In addition, all pedestals are UV-resistant, which guarantees their durability under different weather conditions.

## An overview of our pedestal bearings

AluTec offers a total of 4 different types of pedestals, each designed for different requirements and height adjustments. Approx. 5 pedestals are required per m<sup>2</sup>. The maximum load capacity is approx. 3.15 tons.

- ◇ 5 pedestals / square meter
- ◇ Load capacity of up to 3.15 tons



18 – 31 mm

30 – 65 mm

60 – 140 mm

140 – 220 mm

Pedestal bearing

### Center distance of the elevation:

The following table serves as a guideline and does not replace a structural analysis.

Area load [kN/m <sup>2</sup> ]	Center distance [mm] between the profiles *
	800
2,0 [kN/m <sup>2</sup> ]	950
3,0 [kN/m <sup>2</sup> ]	850
4,0 [kN/m <sup>2</sup> ]	650
5,0 [kN/m <sup>2</sup> ]	500

\* Example: Distance between the profiles = 800 mm; payload = 4.0 m<sup>2</sup>  
 -> max. span of the profile = 650 mm

The recommended maximum center distance for our AluTec Click decking boards is 80 cm. However, this can be individually adjusted to smaller spacings if required. Statically, however, there is no need to reduce the spacing, as our boards offer high stability and load-bearing capacity, which is guaranteed even with a center distance of 80 cm. In addition, the larger center distance leads to cost savings, as less substructure material is required.





### **AluTec Metallhandels GmbH**

Patriaweg 47  
9400 Wolfsberg  
Austria

office@alutec-austria.at  
+ 43 4352 94 101

We are happy to provide you with more information, personal advice or support in choosing the right products. Simply contact us - our team will help you quickly and competently.

We look forward to helping you with your project!



office@alutec-austria.at



+43 4352 94 101

**FOR MOMENTS  
THAT LAST.**